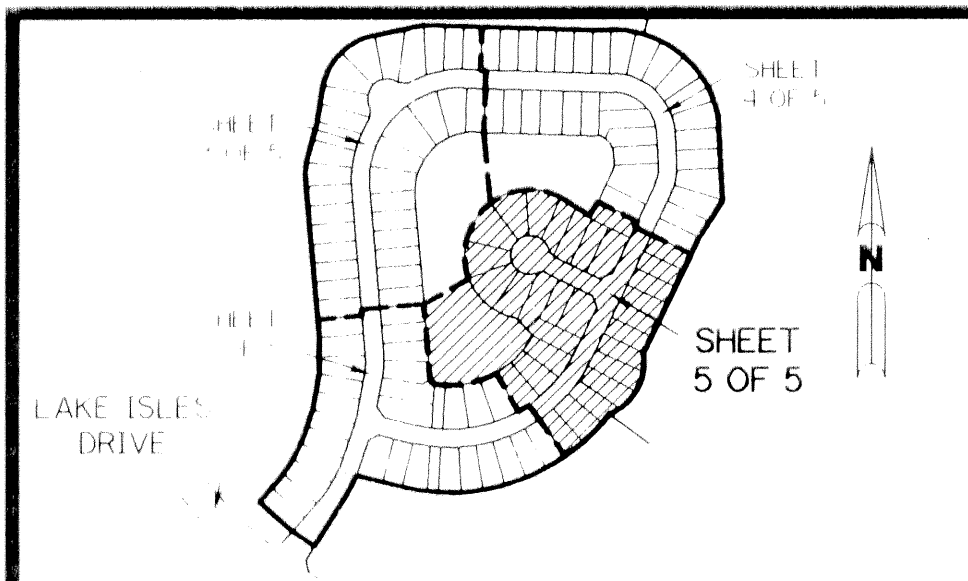


A PART OF THE ORANGE POINT P.U.D.

# ORANGE POINT - TRACT "C"

BEING A REPLAT OF ALL OF TRACT "C" ACCORDING TO THE PLAT OF ORANGE POINT SECTION 23 AS RECORDED IN PLAT BOOK 79, PAGES 137 THROUGH 132, INCLUSIVE, OF THE PUBLIC RECORDS OF PALM BEACH COUNTY, FLORIDA. LYING IN SECTION 23, TOWNSHIP 44 SOUTH, RANGE 41 EAST. VILLAGE OF WELLINGTON, PALM BEACH COUNTY, FLORIDA

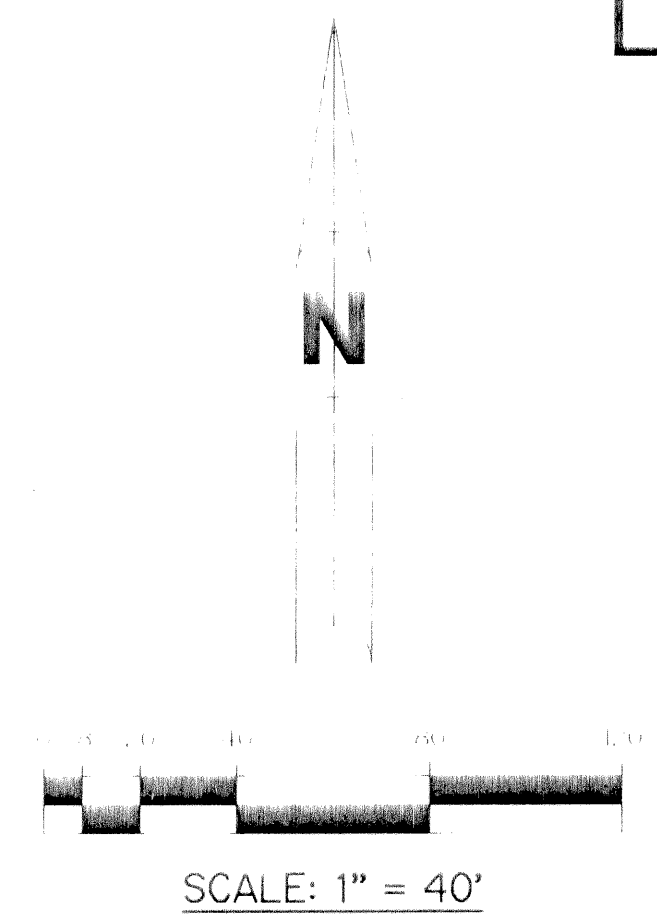
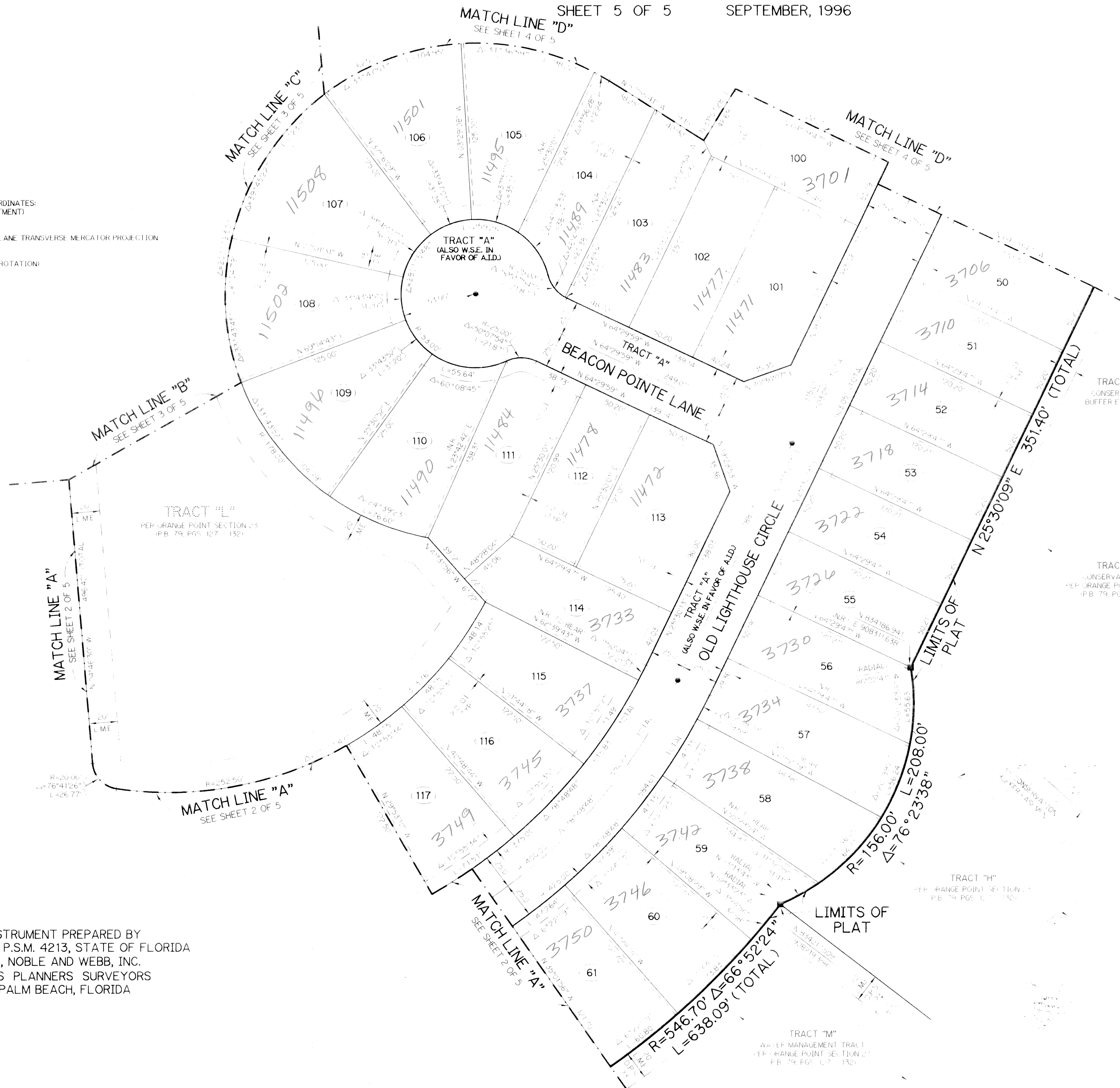
SHEET 5 OF 5 SEPTEMBER, 1996



KEY MAP

**NOTE:**

COORDINATES SHOWN ARE GRID COORDINATES:  
DATUM = NAD 83 (1990 ADJUSTMENT)  
ZONE = FLORIDA EAST ZONE  
LINEAR UNIT = U.S. SURVEY FEET  
COORDINATE SYSTEM 1983 STATE PLANE TRANSVERSE MERCATOR PROJECTION  
ALL DISTANCES ARE GROUND  
SCALE FACTOR = 1.0000121  
PLAT BEARING = GRID BEARING (NO ROTATION)



**LEGEND:**

- PM PERMANENT REFERENCE MONUMENT, PLS #5273
- PRM PERMANENT REFERENCE MONUMENT, PLS #4212
- PCP PERMANENT CONTROL POINT, PLS #4213
- Δ DELTA ANGLE
- DI DISTANCE IMPROVEMENT (DISTRIB)
- BE BUFFER EASEMENT
- BFB BEARING
- HD HORD DISTANCE
- CL CENTERLINE
- DE DRAINAGE EASEMENT
- AL LENGTH
- IAE LIMITED ACCESS EASEMENT
- MAE LAKE MAINTENANCE ACCESS EASEMENT
- ME LAKE MAINTENANCE EASEMENT
- RA RADIAL
- NT NOT TANGENT
- RT RIGHT ANGLE
- MEASUREMENT
- ORANGE POINT SECTION 23
- ORANGE POINT SECTION 23
- OFFICIAL RECORD BOOK
- OS OPEN SPACE
- PLB PLAT BOOK
- PC POINT OF CURVATURE
- PLS PAGES
- PLS PROFESSIONAL LAND SURVEYOR
- PLS PROFESSIONAL SURVEYOR AND MAPPER
- PT POINT OF TANGENCY
- PLD PLANNED UNIT DEVELOPMENT
- R RADIUS
- RTA RIGHT OF WAY
- ST SURVEY TIE
- TL TANGENT LENGTH
- UE UTILITY EASEMENT
- W&S WATER & SEWER EASEMENT
- PLS DENOTES STATE PLANE COORDINATES

THIS INSTRUMENT PREPARED BY  
PERRY C. WHITE, P.S.M. 4213, STATE OF FLORIDA  
LAWSON, NOBLE AND WEBB, INC.  
ENGINEERS PLANNERS SURVEYORS  
WEST PALM BEACH, FLORIDA

BOOK 79 PAGE 197  
FLOOD ZONE 100/5 FLOOD MAP # 18  
QUAD # 63 ZONING RE  
ZIP CODE 33414  
PUD NAME Village of Wellington